

EXTERIOR USL-FL91E General Wall Washer



Exterior



Interior



Dimmable



5 Year Warranty

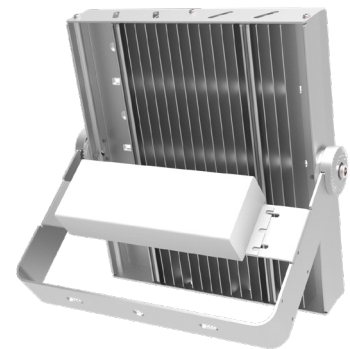


OVERVIEW

US Luminaire's line of general wall washers are suited for stadiums, parking lots and any general outdoor scene highlighting. It has a modular design, allowing for a wide range of luminous intensity.

FEATURES

- Lifespan over 100,000 hours
- PF>0.95
- IP65
- Modular design



ORDERING INFORMATION

EXAMPLE PN: USL-FL91E-50W-50K-90D-0

USL-FL91E	POWER	CCT	BEAM ANGLE*	DIMMING
	50W 50 WATTS	27K 2700K	15D 60*15°	0 NONE
	100W 100 WATTS	30K 3000K	30D 60*30°	10V 0-10V
	150W 150 WATTS	40K 4000K	90D 60*90°	
	200W 200 WATTS	50K 5000K		
	300W 300 WATTS	60K 6000K		
	400W 400 WATTS			
	600W 600 WATTS			
	900W 900 WATTS			

*Note: 60*90° is the standard configuration.

SPECIFICATIONS

MODEL	OPERATION VOLTAGE	AMBIENT OPERATING TEMP	RATED LIFESPAN	CCT	CRI	EFFICACY
USL-FL91E	100-277V AC	-40°F – 131°F -40°C – 55°C	100,000 HOURS	2700 – 6000K	75+	130 lm/W

EXTERIOR USL-FL91E General Wall Washer



MODEL	NUMBER MODULES	CURRENT (A)	POWER (W)	LUMENS (lm)	EFFICACY (lm/W)
USL-FL91E-50W	1x1	1.95	50	6,500	130
USL-FL91E-100W	2x1	1.95	100	13,000	130
USL-FL91E-150W	3x1	2.9	150	19,500	130
USL-FL91E-200W	4x1	3.85	200	26,000	130
USL-FL91E-300W	5x1	5.8	300	39,000	130
USL-FL91E-400W	4x2	7.7	400	52,000	130
USL-FL91E-600W	6x2	11.6	600	78,000	130
USL-FL91E-900W	9x2	17.5	900	117,000	130

DIMENSIONS

MODEL	NUMBER MODULES	L LENGTH	A - LIGHT HEIGHT	H HEIGHT	D DEPTH	WEIGHT
USL-FL91E-50W	1x1	12.6 in 320 mm	3.1 in 77.5 mm	6.8 in 173 mm	3.4 in 87.5 mm	5.3 lb 2.4 kg
USL-FL91E-100W	1x2		6.1 in 155 mm	8.9 in 227 mm	4.0 in 103 mm	7.0 lb 3.2 kg
USL-FL91E-150W	1x3		9.2 in 233 mm	10.5 in 266 mm		8.6 lb 3.9 kg
USL-FL91E-200W	1x4		12.2 in 310 mm	13.9 in 345 mm		10.1 lb 4.6 kg
USL-FL91E-300W	1x5		15.2 in 387 mm	19.8 in 503 mm		13.2 lb 6.0 kg
USL-FL91E-400W	2x4	21.3 in 540 mm	12.2 in 310 mm	16.6 in 422 mm		5.4 in 138 mm
USL-FL91E-600W	2x6		18.3 in 464 mm	23.0 in 584 mm	30.9 lb 14.0 kg	
USL-FL91E-900W	2x9		27.6 in 700 mm	31.8 in 807 mm	46.3 lb 21.0 kg	

