

# ARCHITECTURAL USL-LCPIY Cylindrical Pendant

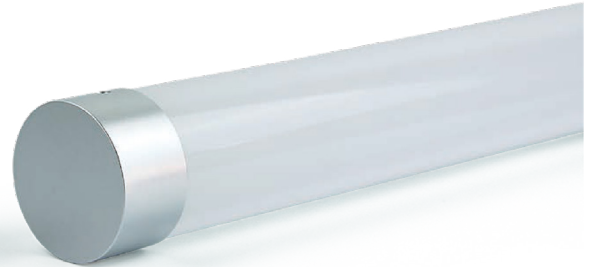


PROJECT	TYPE	DATE
---------	------	------

- Architectural
- Interior
- Dry Location
- Dimmable
- AC
- Up/Down
- Omni-direction
- POE
- CCT Select
- 5 Year Warranty

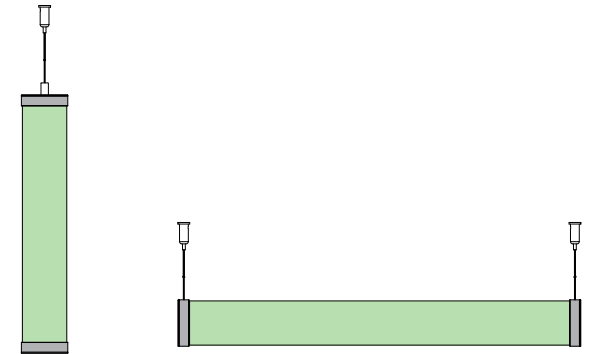
## OVERVIEW

This cylindrical pendant has a 360 degree beam. The end caps can be custom colors. It can be mounted either as a horizontal or vertical pendant. The fixture supports TRIAC dimming, 0-10V dimming, and DALI.



## FEATURES

- IP22
- 6030 aluminum end cap
- 360° polycarbonate diffusing lens
- Custom RAL colors available
- Multiple dimming options
- CCT-selectable versions available



VERTICAL PENDANT

HORIZONTAL PENDANT

## ORDERING INFORMATION

EXAMPLE PN: USL-LCPIY-4-30W-35K-10V-SA-HZ

USL-LCPIY	SIZE / POWER	CCT	DIMMING	FINISH	SUSPENSION
	<b>2-15W</b> 2 FT, 15 WATTS	<b>27K</b> 2700K	<b>0</b> NON-DIM	<b>WP</b> WHITE MATTE	<b>HZ</b> HORIZONTAL
	<b>4-30W</b> 4 FT, 30 WATTS	<b>35K</b> 3500K	<b>10V</b> 0-10V	<b>BP</b> BLACK MATTE	<b>VT</b> VERTICAL
	<b>5-30W</b> 5 FT, 30 WATTS	<b>40K</b> 4000K	<b>TRI</b> TRIAC	<b>SP</b> SILVER MATTE	
	<b>8-60W</b> 8 FT, 60 WATTS	<b>CS</b> COLOR	<b>DALI</b> DALI	<b>RAL</b> CUSTOM RAL	
	<b>CL</b> CUSTOM LENGTH*	SELECT 18K-65K	<b>POE</b> DRIVERLESS FOR POE		

\*Note: custom lengths available up to 19.6 feet (6 m)

# ARCHITECTURAL USL-LCPIY Cylindrical Pendant



## SPECIFICATIONS

MODEL	OPERATION VOLTAGE	CCT	CRI	EFFICACY
USL-LCPIY	120-277V AC	2700K, 3500K, 4000K	80+ STANDARD 90+ OPTIONAL	141-158 lm/W

MODEL	POWER (W)	LUMENS (lm) ±10%	LUMEN PER FOOT (lm/ft)	WATTS PER FOOT (W/ft)	EFFICACY (lm/W)
USL-LCPIY-2-15W	14.3	2,016	1,011	7.17	141
USL-LCPIY-4-30W	28.6	4,032	1,017	7.22	141
USL-LCPIY-5-30W	28.6	4,532	916	5.78	158
USL-LCPIY-8-60W	57.3	8,064	1,021	7.25	141

## POE OPERATING DETAILS

MODEL	CURRENT	VOLTAGE
<b>USL-LCPIY-2-15W</b>	350 mA	32-40V
<b>USL-LCPIY- 4-30W</b>	700 mA	
<b>USL-LCPIY- 5-30W</b>	850 mA	
<b>USL-LCPIY- 8-60W</b>	1200 mA	

## DIMENSIONS

MODEL	L LENGTH	D DIAMETER
<b>2-15W</b>	23.9 in 608 mm	2.5 in 63 mm
<b>4-30W</b>	47.6 in 1208 mm	
<b>5-30W</b>	59.4 in 1508 mm	
<b>8-60W</b>	94.8 in 2408 mm	

